

# Behavioral Health Safe Environmental Design



**Matthew Stiene, PE Senior Vice President**  
**Construction and Facility Services**

8-31-21

# Mission

Novant Health exists to improve the health of communities, one person at a time.

# Vision

We, the Novant Health team, will deliver the most remarkable patient experience in every dimension, every time.

# Values

- Compassion
- Diversity, Inclusion and Equity
- Excellence
- Teamwork
- Courage

## Our people

We are an inclusive team of purpose-driven people inspired and united by our passion to care for each other, our patients and our communities.

## Our promise

We are relentlessly pursuing remarkable care every day — so you can expect the compassionate, expert, personal experience you deserve.

## Our principles

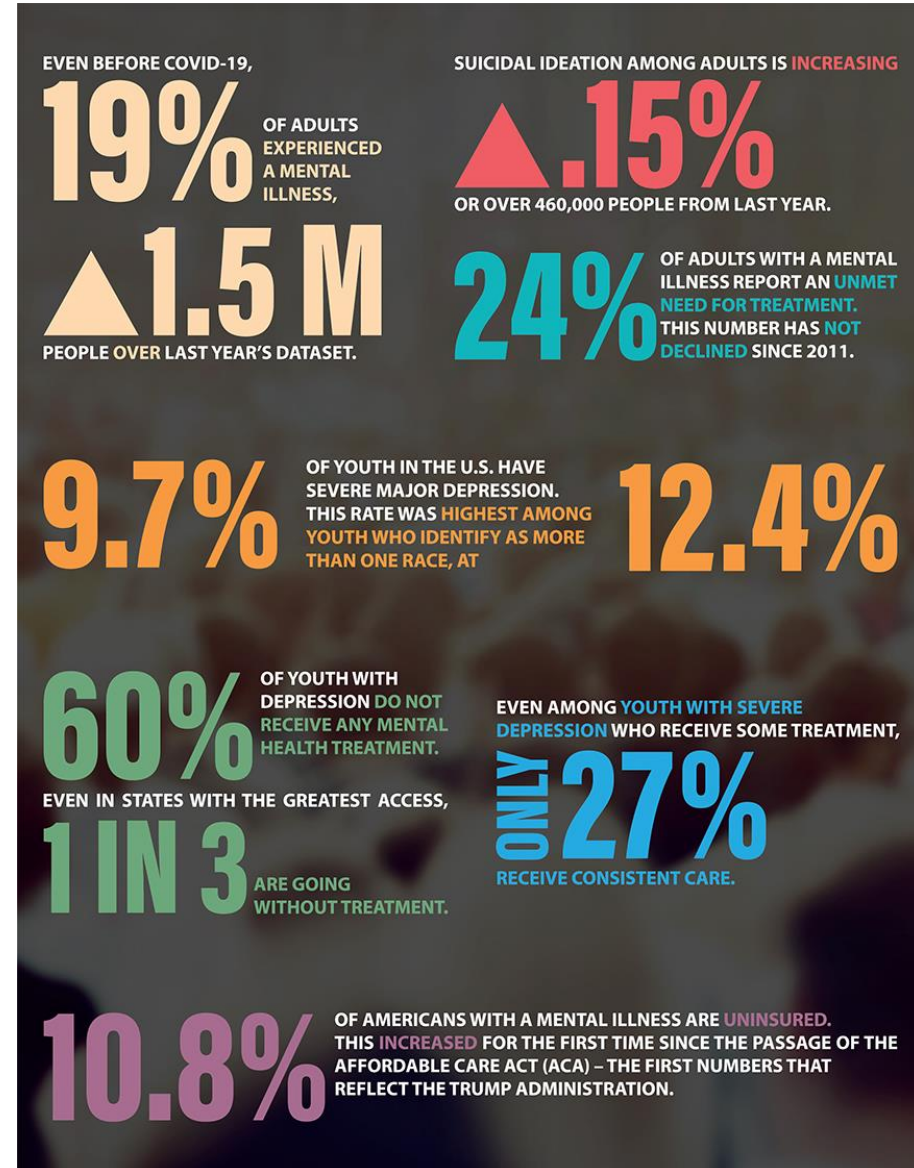
Human-Centered • Access for All  
World-Class Care • Purposeful Innovation



# Why is this important?

- **Increase in need for Behavioral Health Services**
- **Joint Commission NPSG 15.01.01**
- **It is the right thing to do**

# Why is this important?



# Where do you start?

## Inpatient Behavioral Health Units

- Key considerations
  - Age of population
  - Acuity of population
  - Location in the facility

## Emergency Departments

- Key considerations
  - Dedicated Space
  - Use of non BH space
  - Elopement

## All other spaces

- Key considerations
  - Making space safe
  - Location
  - Elopement

Biggest take away from today

Sorry

There is not a one size fits all  
approach

# What have we done

- **Multi year journey that has evolved**
- **Creation of a BH Risk Assessment tool**
- **Creation of a BH Risk Assessment team by facility**
- **Annual assessments across the system**
- **Development of a checklist for rooms that are not traditionally used for BH patients**
- **Standard furniture**



# Risk Assessment Tool

Designed for the inpatient or emergency department dedicated unit and includes:

- General Criteria
- Sleeping Rooms
- Bathroom
- Seclusion Rooms
- Entrance to Unit
- Dining Room
- Nursing Stations
- Utility Rooms
- Staff Offices
- Outdoor Areas
- Kitchen
- Laundry
- OT rooms



# So you have done your Risk Assessment now what?

- **Mitigate immediate risks**
- **Gather a true multi-disciplinary team**
- **Identify short and long term mitigation strategy**
- **Implement**

# Implementation

## Inpatient Behavioral Health Units

- Key considerations
  - Patient toilet rooms
  - Nurses Stations
  - Day/Community Rooms
  - Corridors
  - Unit entrance

## Emergency Departments

- Key considerations
  - Dedicated Space or Multi-use
  - Restrooms
  - Elopement

## All other spaces

- Key considerations
  - Outdoor Spaces

# Post Implementation

Risk assess, repeat

# Resources

- **Behavioral Health Design Guide**
- **VA Design Guide for Inpatient Mental Health and Residential Rehabilitation Treatment Program**
- **New York State Office of Mental Health Patient Safety Standard Materials and Systems Guidelines**